

# Synchronize Views: Camera Option

TerraScan, versions 016.009 and above

GeoCue Group Support

6/6/2017

Revision 1.0

TerraScan provides from the ability to synchronize MicroStation views by making one view dependent on a master view. The dependent view then updates when the master view changes. One advantage of this tool is that it allows the visualization of the same location using different attributes simultaneously, which can be extremely useful for quality assurance/quality control of point classification.

Beginning with TerraScan v016.009 the ability to synchronize a camera view was introduced. This option allows the dependent view to display an image referenced from an Image List within TerraPhoto. TerraScan will select the best image (nadir or oblique) for the given viewing direction in the master view.



To use this option, activate the Synchronize Views tool from the TerraScan View Laser toolbar. For the MicroStation view that you wish to display the images selected the Camera option. Next, designate the master MicroStation view. Then, select the camera(s) from which images to select to reference in the dependent view. Depending on your camera arrangement for that mission, options include images from any, nadir, or oblique cameras (Figure 1).

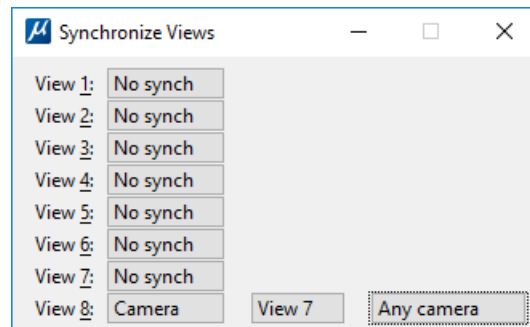
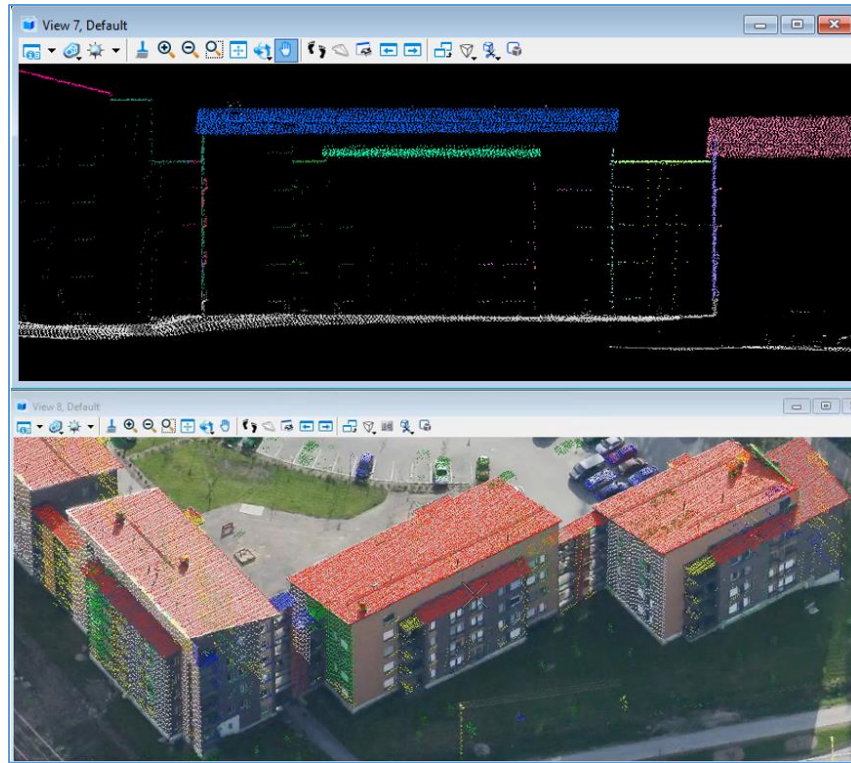


Figure 1: Synchronize Views dialog

Next, create a profile view (Draw Vertical Section tool) of the desired object (such as the side of a building) in the master MicroStation view. TerraScan will then select the best image to view that object from that perspective in the dependent MicroStation view. The resulting camera view will not necessarily be a perfect match for the master view, but it will be the closest image possible with the given camera and mission arrangement (Figure 2). Note that the direction in which one draws the section view in this case is significant as it determines the viewing direction, hence, the selection of the appropriate image. For instance, taking the vertical section from left to right across the building in this example will show the image as in Figure 2. However, doing so from right to left will be looking for an image from the inside of the building.

## Tools

# Synchronize Views: Camera Option



*Figure 2: Example camera option showing points colored by groups and classification along with the best image of that location*

For additional information concerning synchronizing views in TerraScan please contact the GeoCue Group Support Team at [support@geocue.com](mailto:support@geocue.com).