


Tools, Tips and Workflows

Display Control Points from ASCII Data

LP360



Nancy Graham
November 2013
Revision 1.0

Add the Control Point ASCII file (.txt file) using the  Add Data Button. (Figure 1)

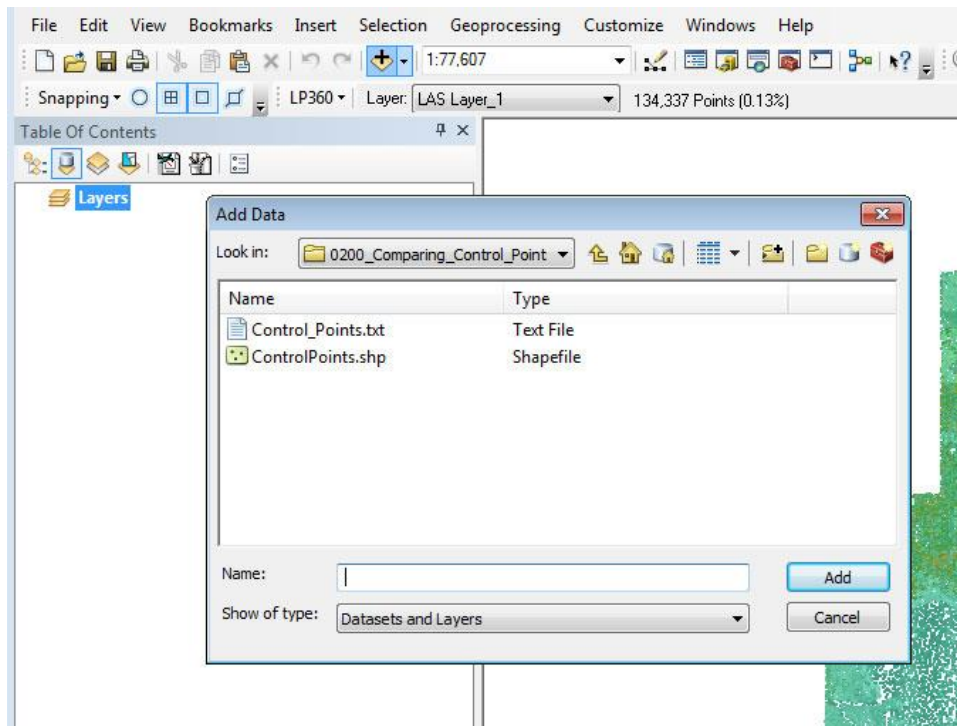


Figure 1

In the Layers tab of the Table of Contents window, right- click the .txt file and select “Display XY Data...” from the drop-down menu. (Figure 2)

Tools, Tips, and Workflows

Display Control Points from ASCII Data

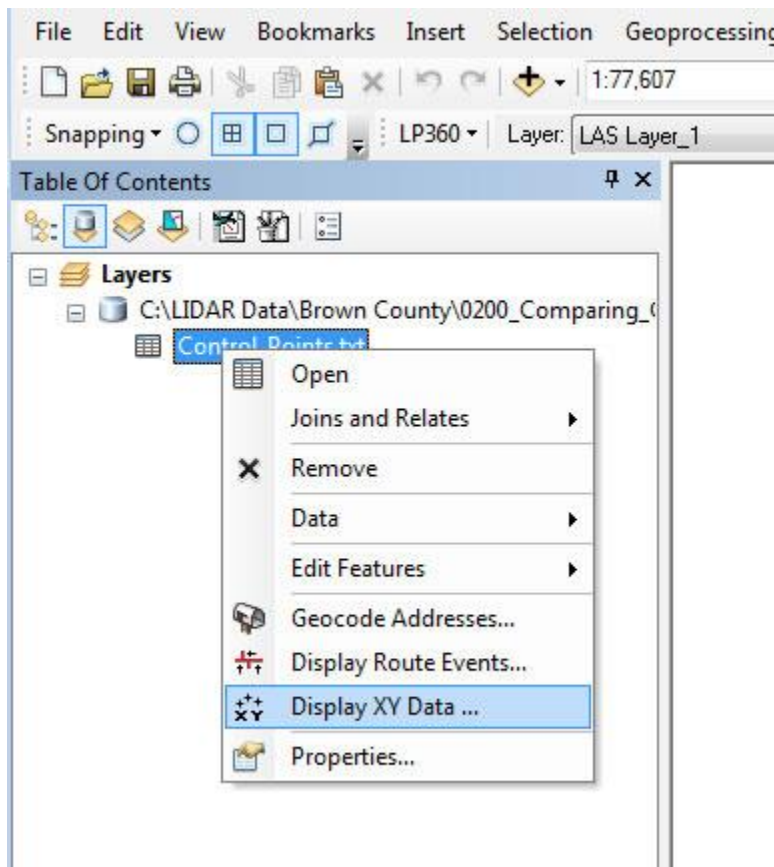


Figure 2

This causes the Display XY dialog to display. Select the Elevation field from the Z Field drop-down list. (Figure 3)

Tools, Tips, and Workflows

Display Control Points from ASCII Data

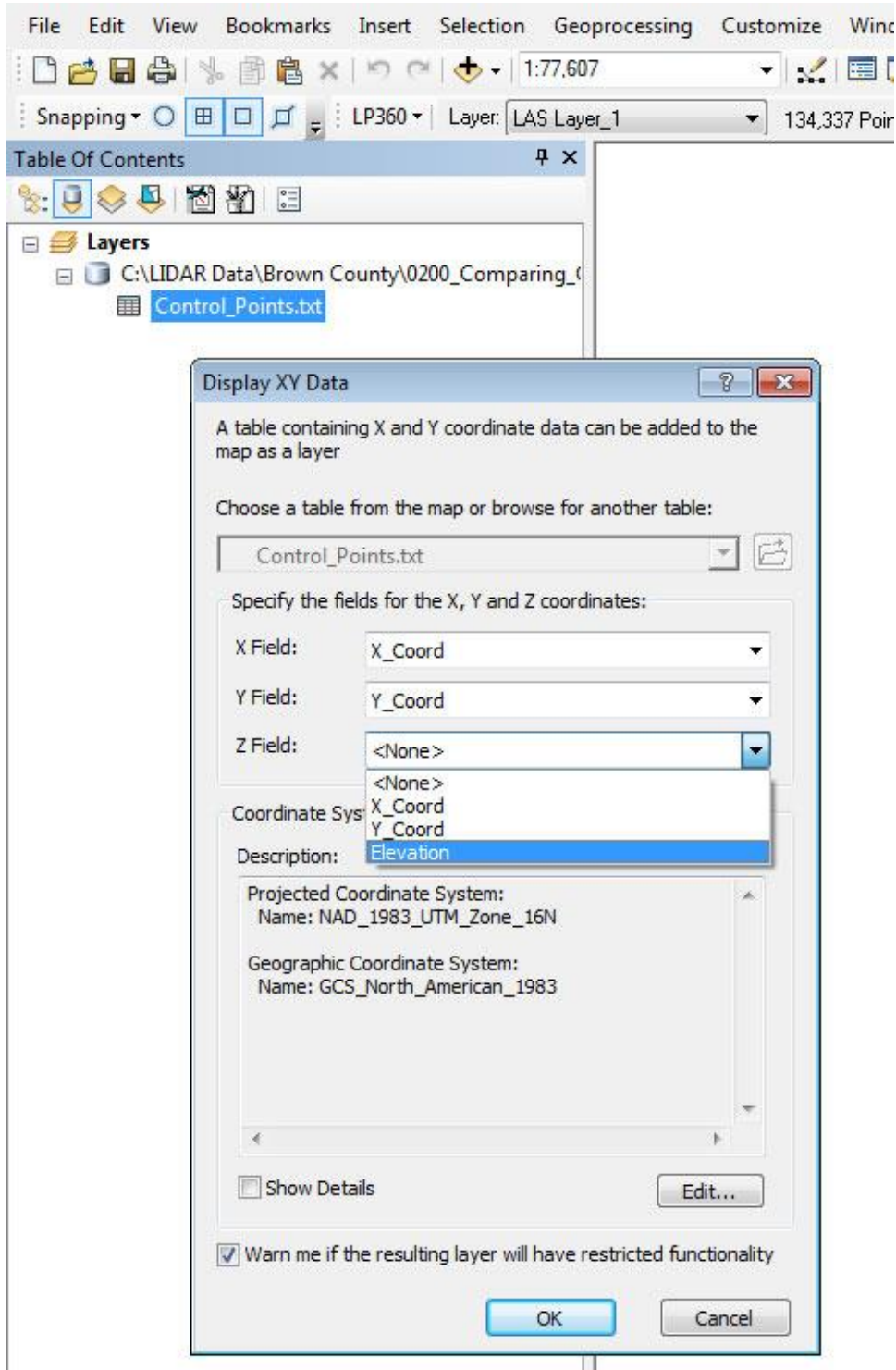


Figure 3

If you get the following dialog, select OK. (Figure 4)

Tools, Tips, and Workflows

Display Control Points from ASCII Data

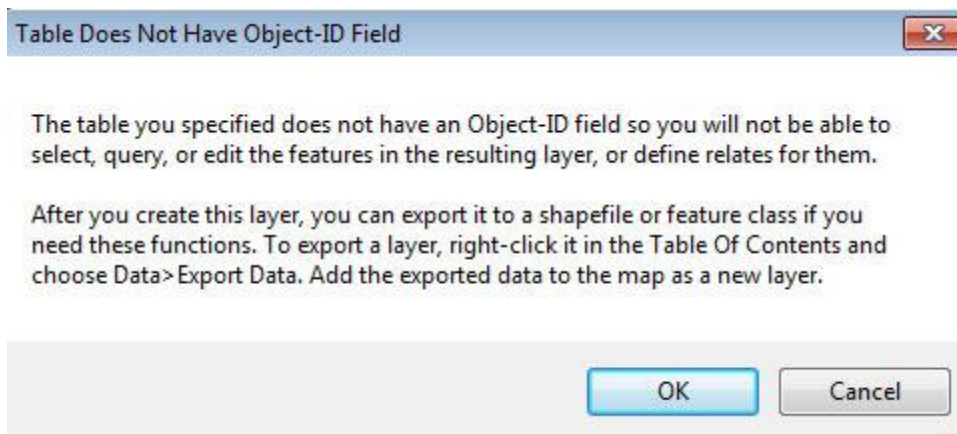


Figure 4

The control points are now displayed in the Map View. (Figure 5)

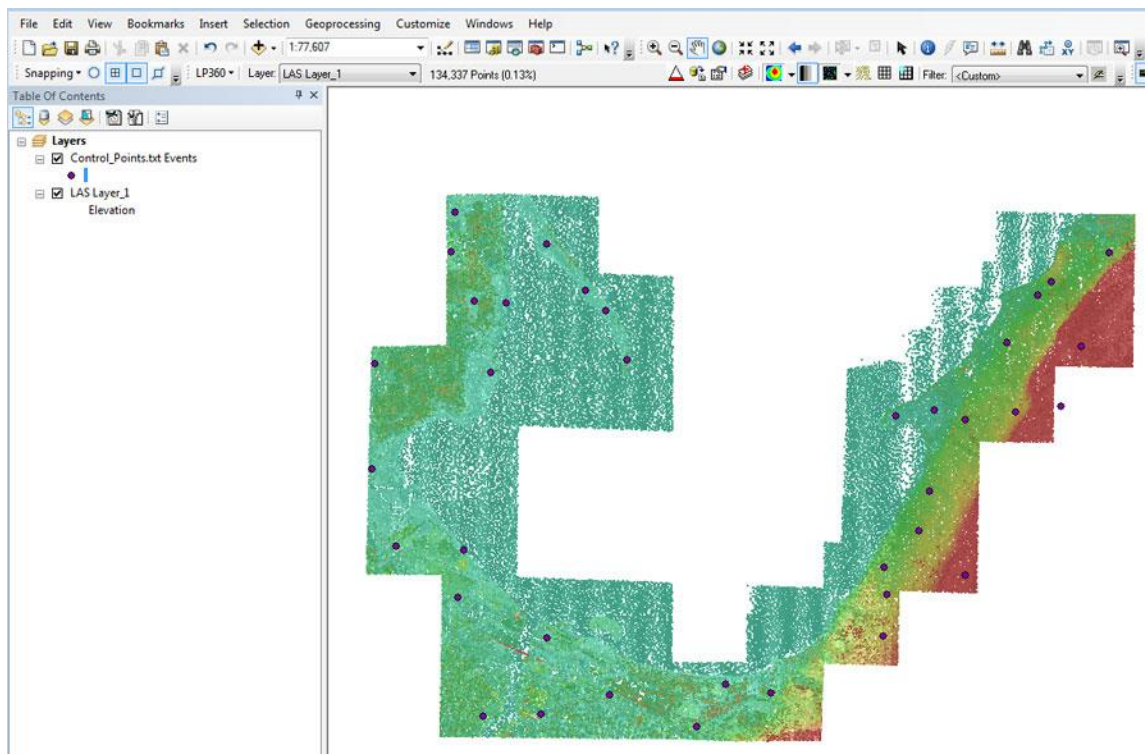


Figure 5

Note: You may have to refresh the Layers tab of the Table of Contents window to be able to drag the control point file into a position to see the control points displayed in the Map view.