

Backing-Up the GeoCue Database and Reconfiguring (Moving) the GeoCue Server to New Hardware

GeoCue Group Support

January 16, 2015

Revision 2.0

Introduction

GeoCue Server runs on top of a SQL database. The database stores all the metadata about your projects as well as all internal links to your geospatial data stored in the GeoCue warehouses. The database may be a full SQL database installation or a limited edition of SQL such as Microsoft SQL Server Express (Express) or Microsoft SQL Desktop Engine (MSDE). Express and MSDE are free versions of SQL limited to 5 concurrent users and a maximum database file size of 4 or 2 GB respectively. Note that it is very important to make sure regular GeoCue database backups are integrated with your standard IT backup and archiving policies. Failure to backup your GeoCue database on a regular basis can result in a significant loss of project data in the case of a hardware or software failure.

From time to time it may be necessary to backup your SQL database as part of your GeoCue backup procedures or when re-configuring (moving) or replacing your server hardware. This CueTip provides instruction on how to complete a GeoCue database backup as well as instructions on how to reconfigure (move) your GeoCue Server to new hardware.

Database Backup Procedure

To backup your GeoCue database use the following procedure:

1. Verify where your GeoCue SQL database is being stored. The database consists of two files; a .MDF and a .LDF. By default they are named geocue_data and placed in the GeoCue Server folder in \Program Files\GeoCue on the GeoCue Server machine, but they can be moved or placed elsewhere during installation. For older installations, the files may be located at \Program Files\NIIRS10. Check with your GeoCue administrator if you cannot locate these files.
2. The procedure to backup your database depends on if you are running under MSDE or a full SQL installation.
 - a. With a full SQL installation or if you are running under Express and have the SQL Management Studio installed, you can back-up the database using the SQL Enterprise Manager/SQL Management Studio. Treat this as per a normal SQL database backup in line with your standard IT backup policy.
 - b. Regular backups of the database can be scheduled as part of the normal SQL backup procedures. Your SQL server administrator should be able to assist you with this.
 - c. Under MSDE you will need to stop the SQL service on the GeoCue Server machine yourself, before you physically make copies of the database files. This is an inherent limitation of MSDE.

Backing-Up the GeoCue Database and Reconfiguring (Moving) the GeoCue Server to New Hardware

- i. Exit all GeoCue Clients and make sure there are no dispatched processes running in the background.
 - ii. On the GeoCue Server machine, stop the GeoCue Dispatch and GeoCue Server services using Windows 'Services'.
 - iii. On the GeoCue Server machine, stop the MSDE service corresponding to your GeoCue database using Windows 'Services'. By default this service will be listed as "MSSQL\$MSDEGEOCUE" or something very similar.
 - iv. Physically make copies of your GeoCue database files in a secure backup location. This is also a convenient time to burn a back-up copy to external media. By default these files are named GeoCue_Data.MDF and GeoCue_Log.LDF and located in the "c:\program files\geocue\GeoCue Server" folder.
 - v. Once you have completed making a backup copy reboot the GeoCue Server machine.
- d. Note that it is usually possible to create a batch script to replicate the MSDE backup procedure to automate the backup process. Talk to your IT support about batching these steps.

Reconfiguring (Moving) the GeoCue Server Machine

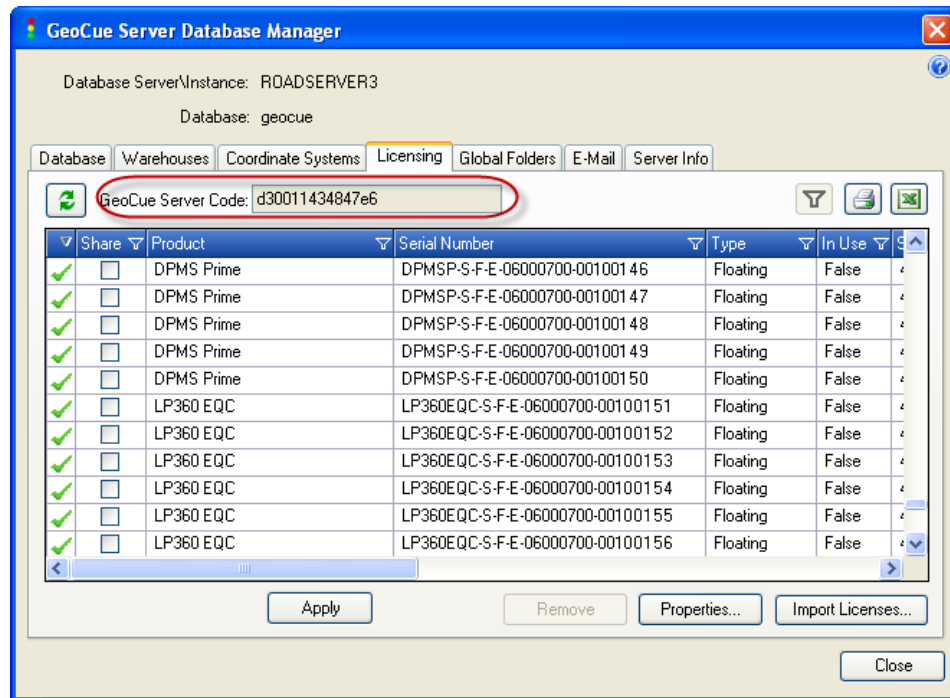
From time to time you may need to reconfigure your GeoCue Server hardware or you may need to move your GeoCue Server from one machine to another. This often happens when replacing or upgrading hardware. In either case the procedure is straightforward. Assuming nothing else will be changed when you reconfigure/replace the server machine (machine names, warehouse locations etc. etc.), the most important thing is to make sure you backup your GeoCue database before you start to reconfigure the hardware. You will then need to re-install the GeoCue Server as if it was a new install, but you will use the backup copy of your original database as the database template during the set-up.

Note if you are moving the GeoCue Server to a new machine, you will need to coordinate with GeoCue Corporation to receive new valid licenses. Please contact GeoCue to request assistance with this before you start to migrate to the new hardware.

1. Backup your GeoCue database as above.
2. Complete the reconfiguration of the hardware or install the new hardware.
3. Re-install GeoCue Server from the original installation disk. There is an installation guide on the CD. If your GeoCue Common folder was on the reconfigured/replaced machine you will need to set it up again, otherwise start from the Master Set-Up menu. Before running the GeoCue Server Database Installation step (p. 11 of the installation guide), copy you backup database files into the \Program Files\GeoCue\GeoCue Server\DB Template\ folder, replacing the files that are already there. This will cause GeoCue to use your backup copy as the initial database.

Backing-Up the GeoCue Database and Reconfiguring (Moving) the GeoCue Server to New Hardware

- Complete the software installation and GeoCue will be re-installed on the new hardware with your original database intact.
- If you are moving the GeoCue Server to a new machine, extract your sever code from the GeoCue Database Manager application and submit it to GeoCue for new licenses. The server code can be found on the 'Licensing' tab of the Database Manger:



- Note if you have a GeoCue warehouse on the machine you are going to reconfigure/replace or if you plan to rename the machine, you will need to move the warehouse or replace machine names in the database first before you reconfigure the machine. Contact GeoCue for instructions on how to accomplish these tasks.

For information on this CueTip, contact:

GeoCue Group Support
 GeoCue Group, Inc.
 9668 Madison Blvd., Suite 202
 Madison, AL 35758
support@geocue.com
 +1-256-461-8289

Find additional information and participate in our GeoCue Group user forums.

<http://support.geocue.com>