

CueTip CueTip - Viewing Work Assigned to Current User



Applies to GeoCue, version 2011 and above.

GeoCue Group Support
April 6, 2016
Revision 1.0

Purpose:

This technical note explains how users may view the work assigned to them via the project management tools within GeoCue. This is typically done when users are splitting up the manually intensive work, such as LIDAR classification QC, amongst many users.

Viewing Production State Symbology	2
Viewing Next Step for Current User.....	3

CueTip

CueTip - Viewing Work Assigned to Current User

Viewing Production State Symbology

Typically we recommend that users view the map with the symbology of the map displaying the production state complete for all users. In order for the symbology to appear a user must both set the map symbology on the Symbology Toolbar to have these two buttons enabled (Figure 1), as well as having the production state fill (or outline) enabled on the desired layer (Figure 2).



Figure 1 - Symbology Toolbar with Production State Complete and All Users buttons enabled



Figure 2 - Layer in TOC showing Production State turned on for the visible and selectable layer

The map display (Figure 3) will then show the color of the last step completed in the checklist (Figure 4) as indicated by the lightning bolt. In the example, step 3 – Populate, as represented the dark blue checklist step color.

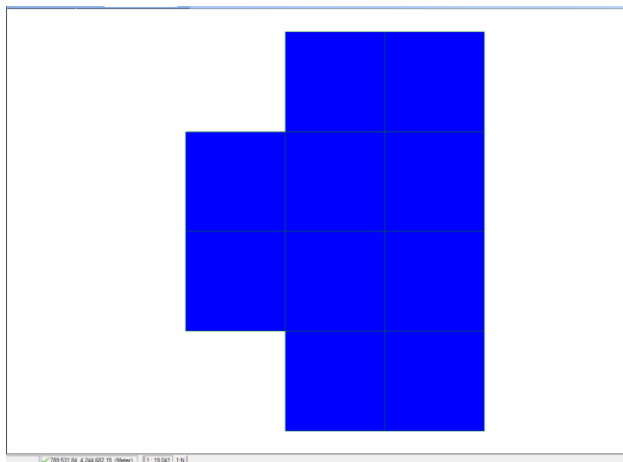


Figure 3 - Map displaying Production State complete for all users

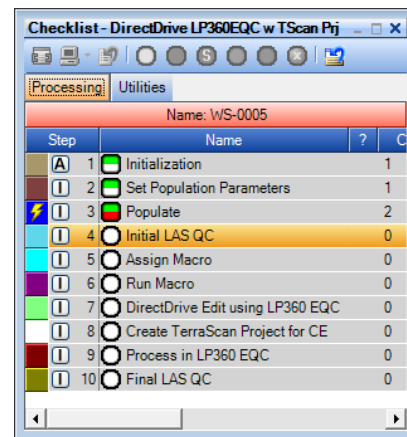


Figure 4 - Checklist

CueTip

CueTip - Viewing Work Assigned to Current User

Viewing Next Step for Current User

One of the management aspects of GeoCue allows production leads or project managers to assign entities to users, as well as set start and completion dates. If the user desires to see the work assigned to them they would modify the map symbology on the Symbology Toolbar to next production state for current user (Figure 5).



Figure 5 - Symbology Toolbar with Production State Next and Current User buttons enabled

The map display (Figure 6) will then show the color of the next step in the checklist (Figure 4) to be completed. Recall that the last completed step is indicated by the lightning bolt. In the example, step 4 – Initial LAS QC, as represented the dark cyan checklist step color.

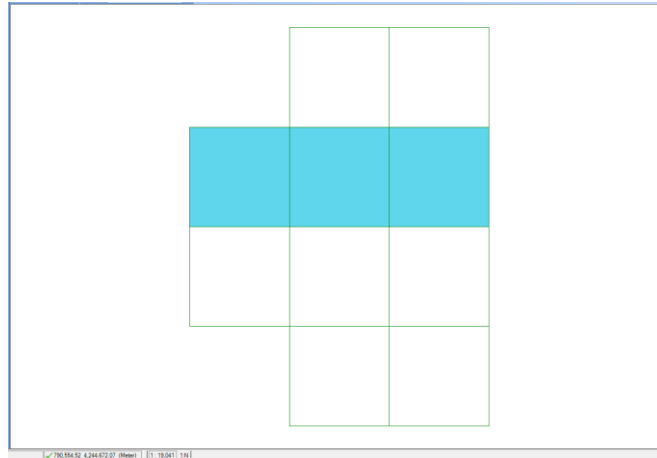


Figure 6 - Map displaying Production State next for current user

Figure 6 then shows that the map displays for the current user which working segments in this example have been assigned to them, and which step of the checklist is to be performed next.

For information on this CueTip, contact:

GeoCue Group Support
GeoCue Group, Inc.
9668 Madison Blvd., Suite 202
Madison, AL 35758
support@geocue.com
+1-256-461-8289

GeoCue Group Support

4/6/2016

©Copyright [year] GeoCue Group Inc.

Find additional information and participate in our GeoCue Group user forums.

<http://support.geocue.com>