

How to Launch an External Application with a TerraScan Project



Applies to GeoCue, versions 2014.1.21.5 and above.

GeoCue Group Support
September 23, 2016
Revision 2.0

Purpose:

This technical note explains how to launch an external application with a TerraScan project from GeoCue 2014 and later. In doing so one may provide a means to pass a TerraScan project to MicroStation Connect before the full support is implemented in GeoCue 2016. One may also use this command to pass a TerraScan project to your own in-house applications.

Introduction 2

How to Launch an External Application with a TerraScan Project 2

 1. Create a Command Parameters Set..... 2

 2. Create Checklist Step 4

 3. Change Checklist 5

 4. Final Result..... 5

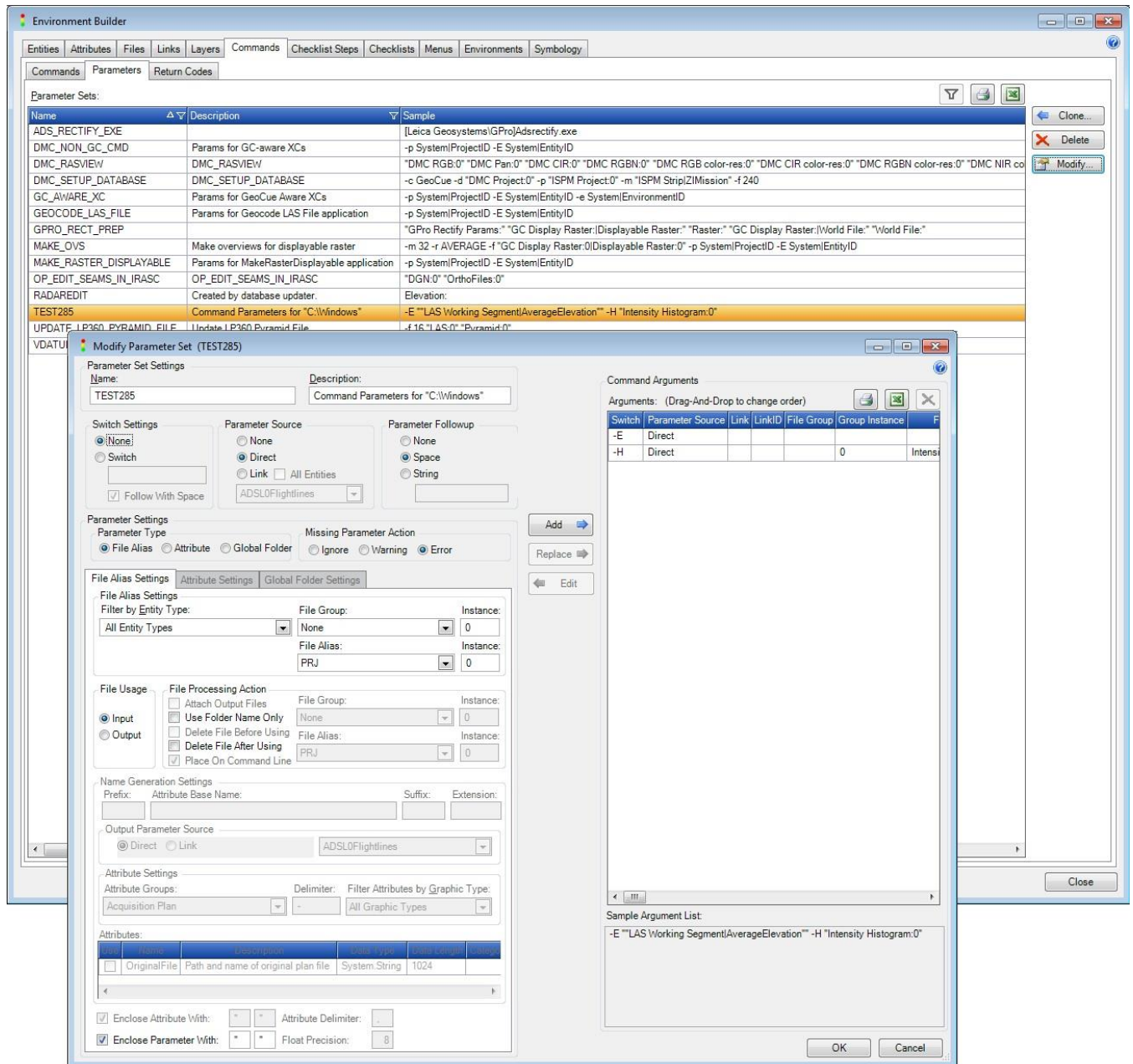
Introduction

The Process_WS_TS command within GeoCue provides a powerful interface between the GeoCue managed LIDAR data and your custom applications. The commonality is the generation of a TerraScan project file which is in an open format and easily programmed.

How to Launch an External Application with a TerraScan Project

1. Create a Command Parameters Set

Define your Command Parameters set to include all the working segment attributes, etc. you want passed on the command line to your external application. Keep in mind that only the parameters for the first working segment in the Working Set Queue will get used. A parameter set is required even if you don't wish to pass any parameters to your external command.



For this example, the average elevation attribute and the intensity histogram file will be passed on the command line using the –E and –H switches respectively.

2. Create Checklist Step

The “In Progress” Command for the step should be PROCESS_WS_TS to kick off Process Working Segments command. Also specify the following **Additional Parameters**:

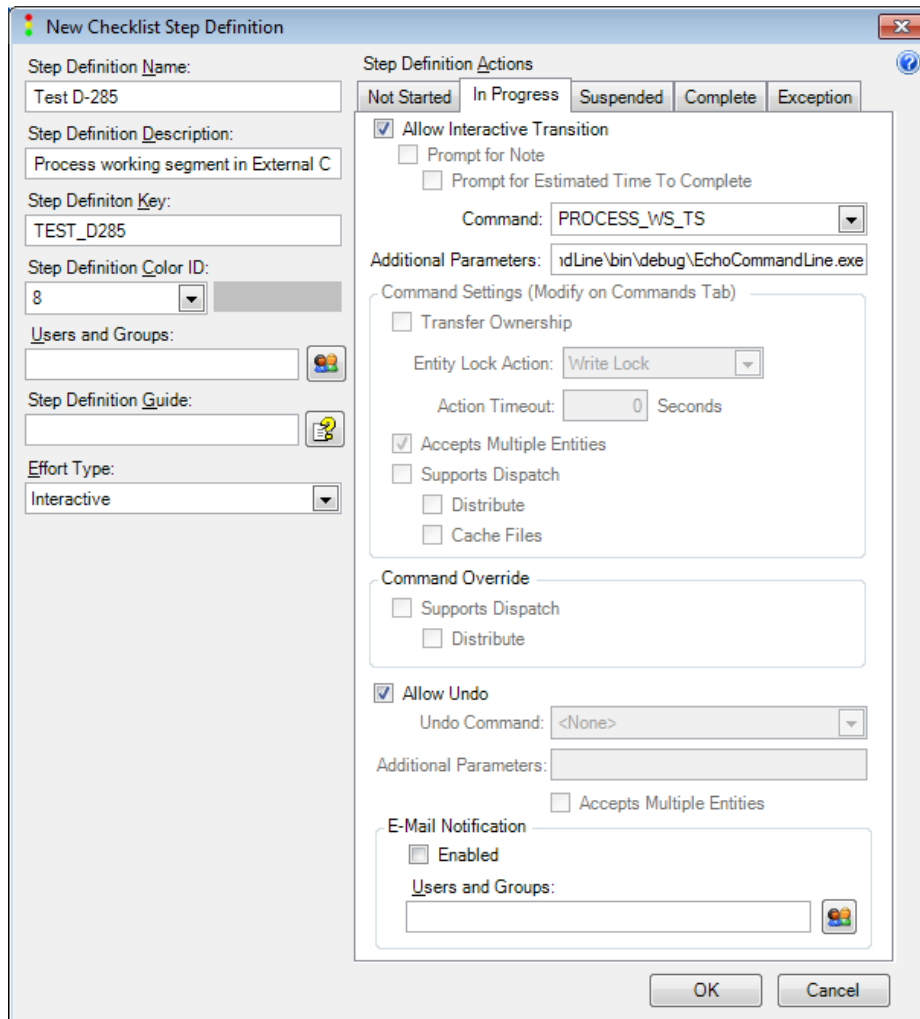
-C TSPO -D CmdParametersName -F PathToExternalApp.exe

The –C TSPO tells the PROCESS_WS_TS command to generate the TerraScan Project only without actually launching TerraScan.

The –D CmdParametersName tells the PROCESS_WS_TS command to launch the application specified by –F with arguments generated via the CmdParametersName.

In the example, the Additional Parameters were:

-C TSPO -D KYLE_TESTD285 -F N:\ MyPrograms\EchoCommandLine\bin\debug\EchoCommandLine.exe



The screenshot shows the 'New Checklist Step Definition' dialog box. The 'Step Definition' section on the left includes fields for Name (Test D-285), Description (Process working segment in External C), Key (TEST_D285), Color ID (8), Users and Groups, Guide, and Effort Type (Interactive). The 'Step Definition Actions' section on the right has tabs for Not Started, In Progress, Suspended, Complete, and Exception. The 'In Progress' tab is active, showing options like 'Allow Interactive Transition' (checked), 'Prompt for Note', 'Prompt for Estimated Time To Complete', 'Command' (PROCESS_WS_TS), and 'Additional Parameters' (rdLine\bin\debug\EchoCommandLine.exe). Below this are 'Command Settings' (Transfer Ownership, Entity Lock Action: Write Lock, Action Timeout: 0 Seconds), 'Command Override' (Supports Dispatch, Distribute), 'Allow Undo' (checked, Undo Command: <None>), and 'E-Mail Notification' (Enabled, Users and Groups).

How to Launch an External Application with a TerraScan Project

3. Change Checklist

Add the new checklist step to your existing checklist or define a new checklist that includes the new step. Make sure the checklist supports the working segment entity types.

4. Final Result

If you create working segments with the new or modified checklist, your external application will get called with the TerraScan project and the additional parameters as defined above. For the example the results were:

```
"N:\MyPrograms\EchoCommandLine\bin\debug\EchoCommandLine.exe"  
\\EEYORE\GeoCueDevWarehouse\80624\4\TestD285\GCLIDAR1.prj -E 168.60371781 -H  
\\EEYORE\GeoCueDevWarehouse\80624\4\TESTD2~1.XML
```



For information on this CueTip, contact:

GeoCue Group Support
GeoCue Group, Inc.
9668 Madison Blvd., Suite 202
Madison, AL 35758
support@geocue.com
+1-256-461-8289



Find additional information and participate in our GeoCue Group user forums.

<http://support.geocue.com>