

GeoCue
6/27/2024
Version 1.0

FreeFly Alta X PLI Installation Guide





CONTENTS

BILL OF MATERIALS (BOM) 3

PAYLOAD INTERFACE (PLI) INSTALLATION 3

 Tools Needed 3

 Installing the mount 3

BATTERY SHIM INSTALLATION..... 7

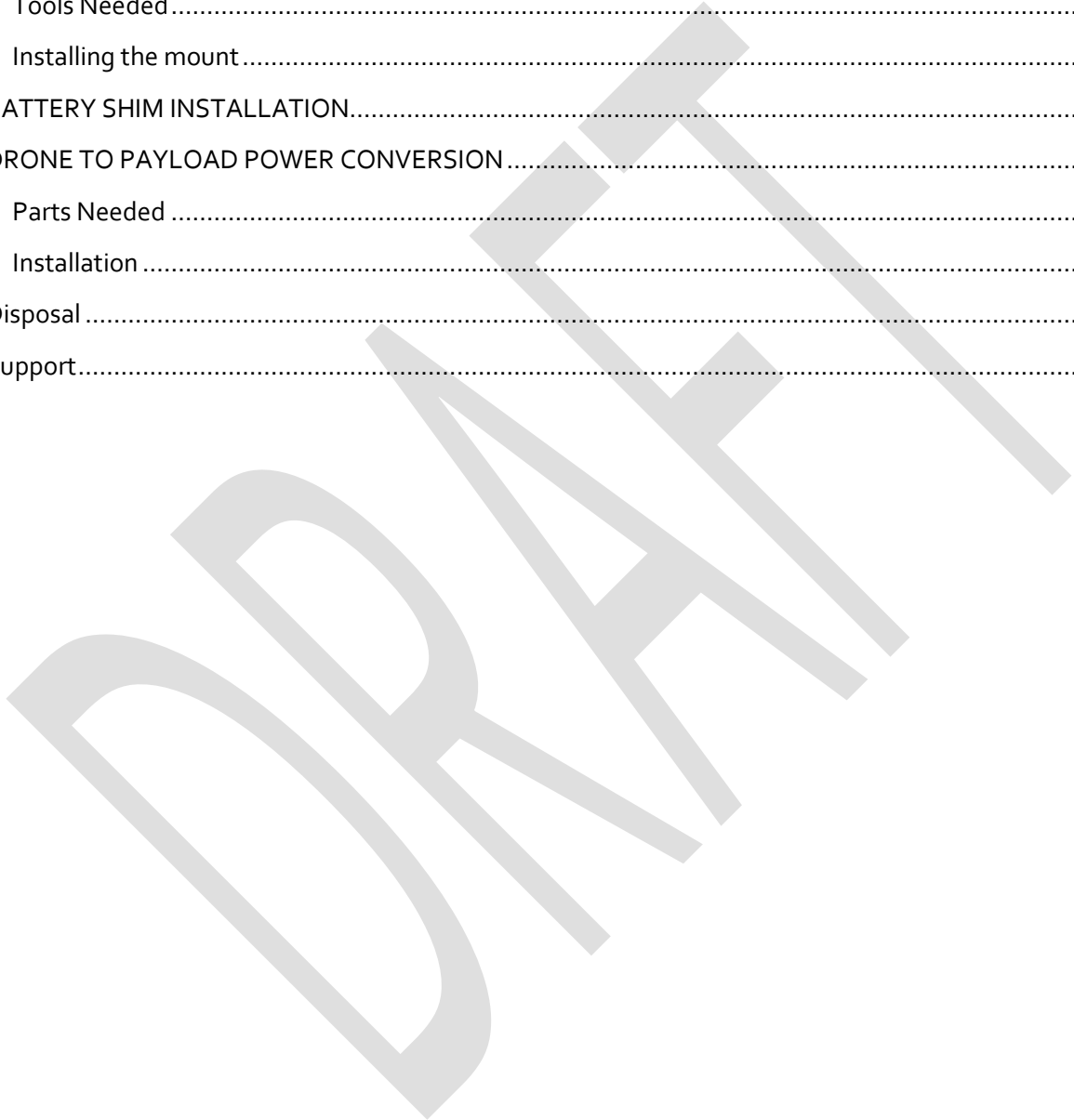
DRONE TO PAYLOAD POWER CONVERSION 9

 Parts Needed 9

 Installation 9

Disposal 10

Support..... 11





BILL OF MATERIALS (BOM)

Part Number	Part Name	Quantity
ASY1001068A01N	Front Handle Payload Interface mount	1
MIS1000254A00N	243 Medium Strength Tread Locker (Loctite)	1
	SMB connector mount for back rail clamp	1
MIS1001583A00T	Alta X Battery Shim	2

Table 1. BOM of Alta X PLI assembly

PAYLOAD INTERFACE (PLI) INSTALLATION

Tools Needed

2.5 MM Hex Driver

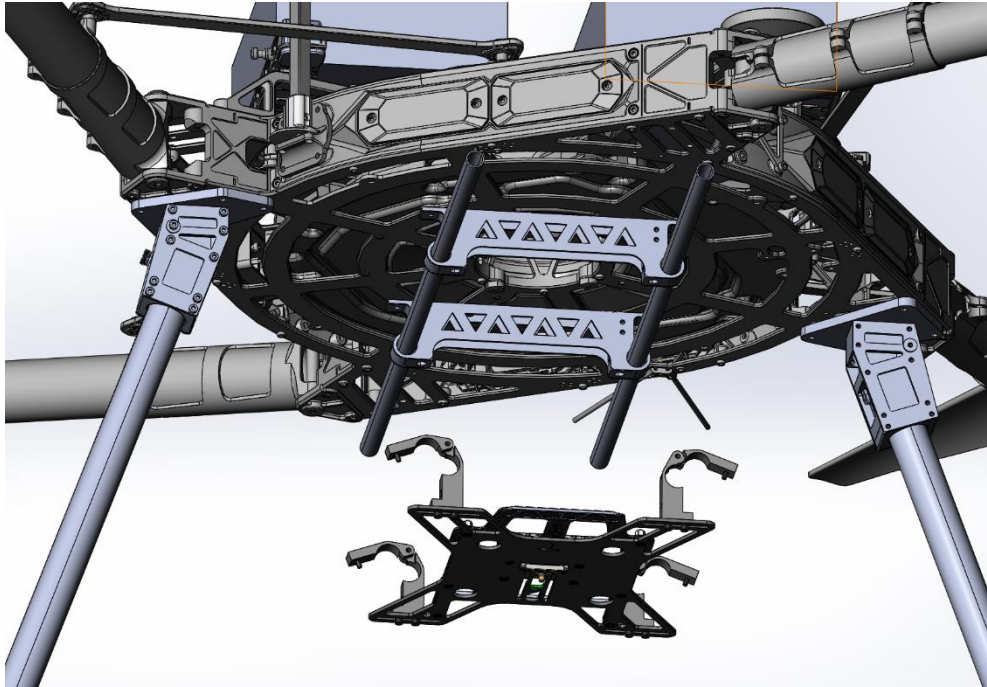
243 Medium Strength Tread Locker (Loctite)

Installing the mount

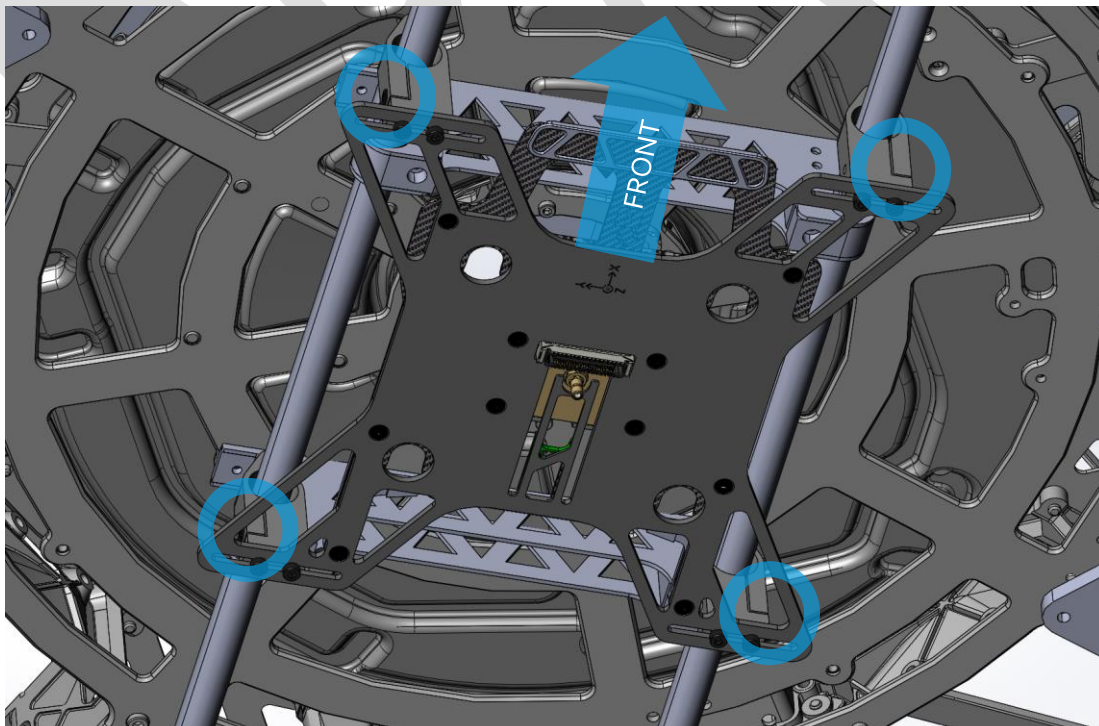
This guide requires that your Alta X drone be equipped with the Drone Amplified landing gear and 12mm parallel rail mounting kit. Please consult the [True View Alta X Mount Installation Guide](#) for instructions if this kit is not already installed.



1. Open the rail clips on the Front-handle PLI mount.

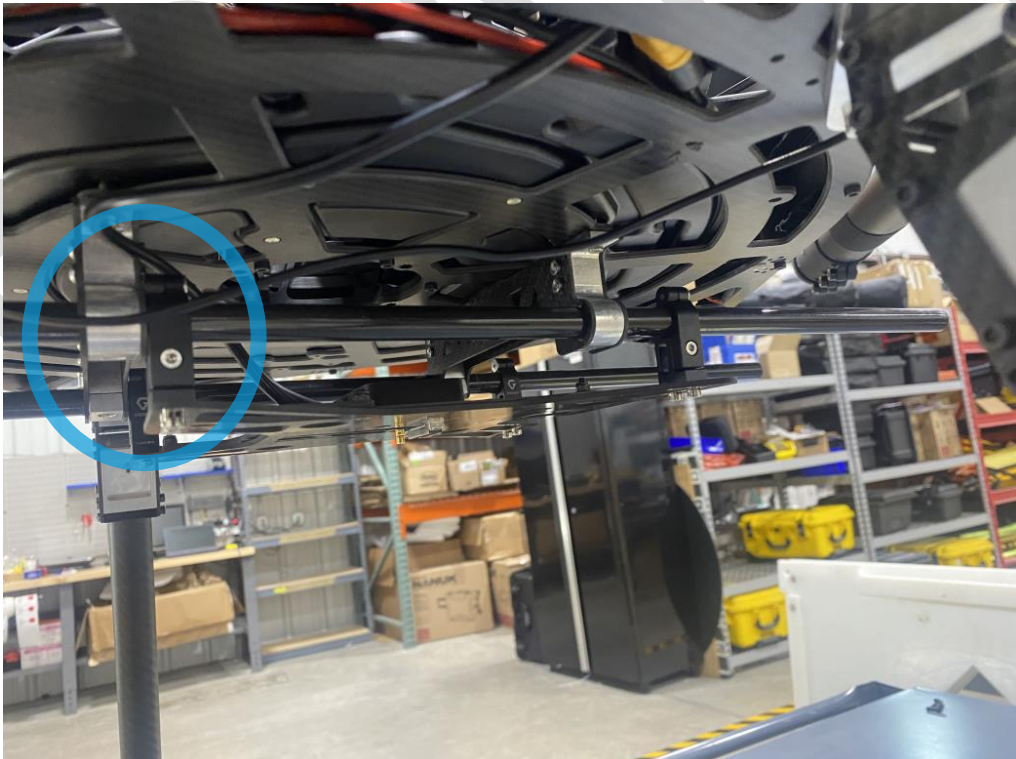
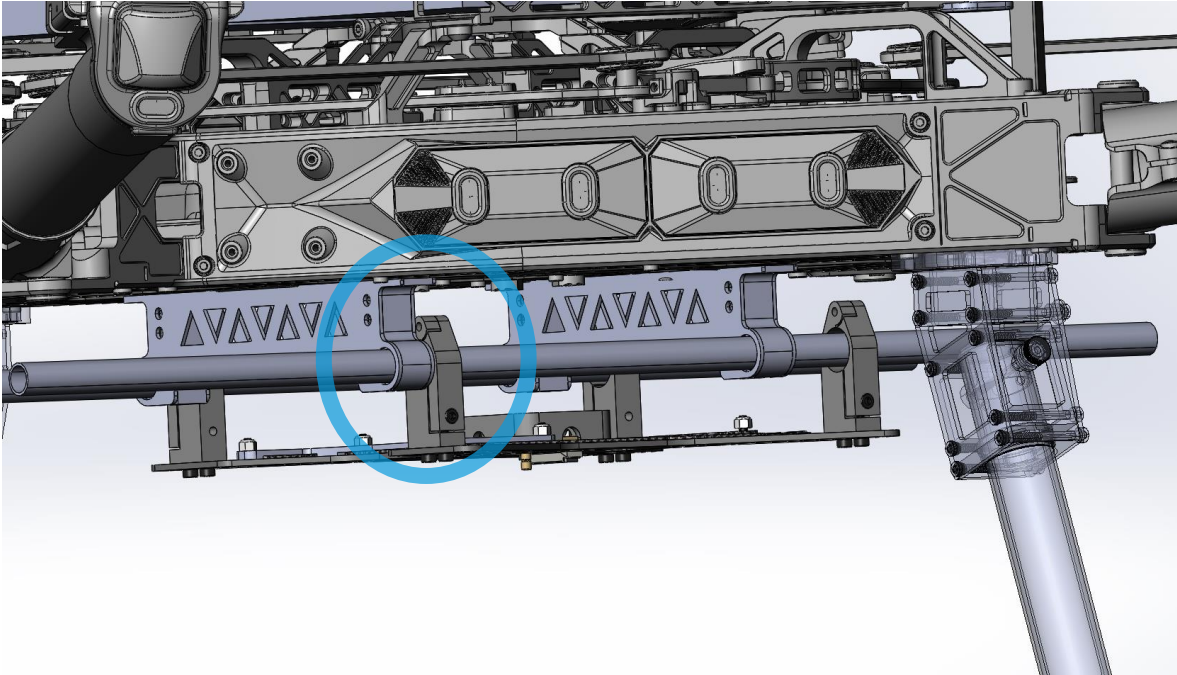


2. Close the rail clips on the 12mm parallel rails. Secure the 4x M3 screw with one drop of 243 medium strength thread locker.
The handle must face towards the front of the drone.





The back clips must be aligned with the back rail clamps, as illustrated below.





3. Install the coaxial antenna cable clip through the back rail clamp mount using the provided SMB connector mount.

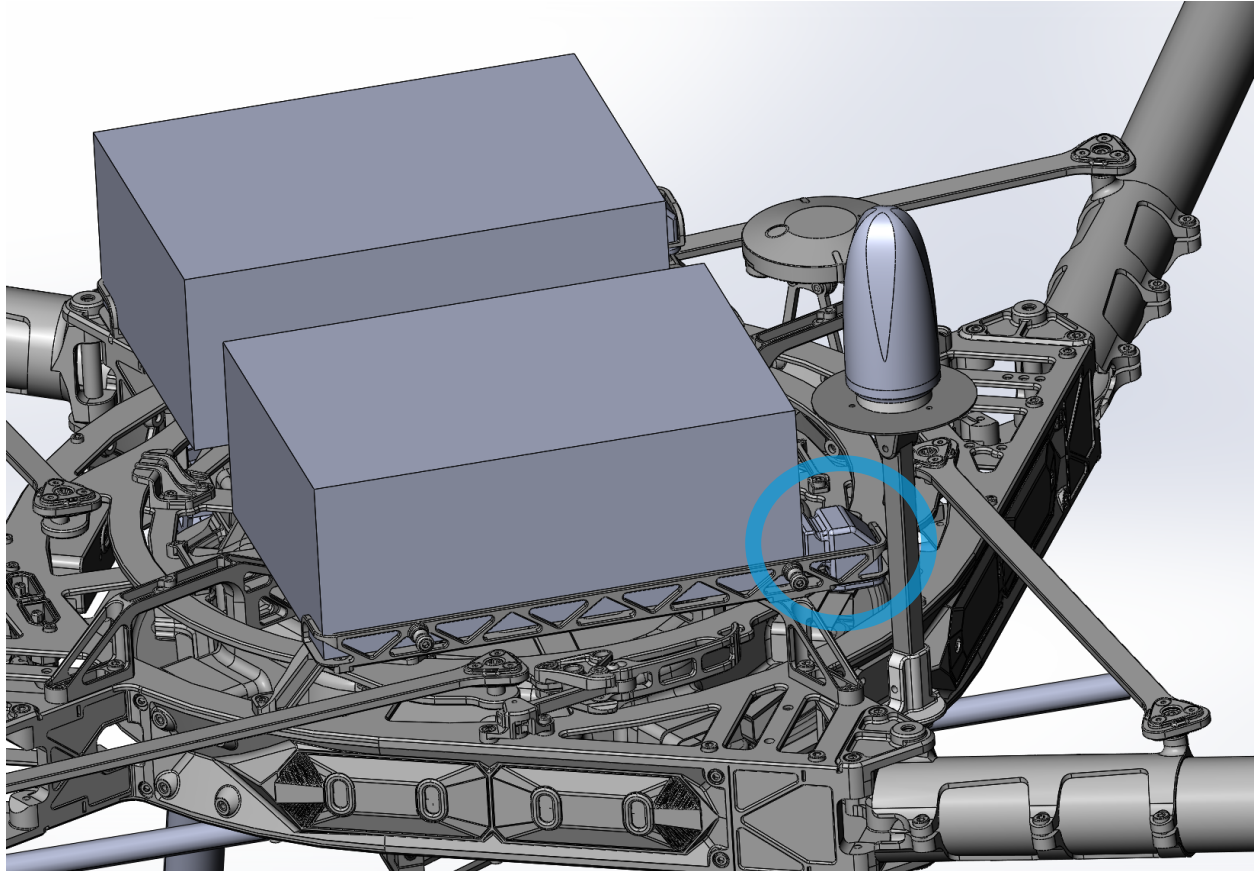


4. Route the coaxial antenna cable from the antenna to the PLI's coaxial SMB connector (see image above).

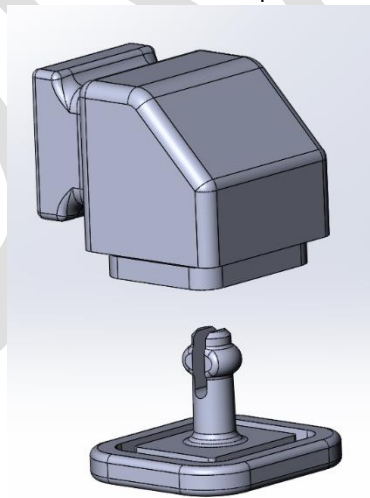


BATTERY SHIM INSTALLATION

To prevent accidental damage to the payload's GNSS antenna mast, GeoCue provides a battery shim preventing movement of the Alta X's battery during flight.

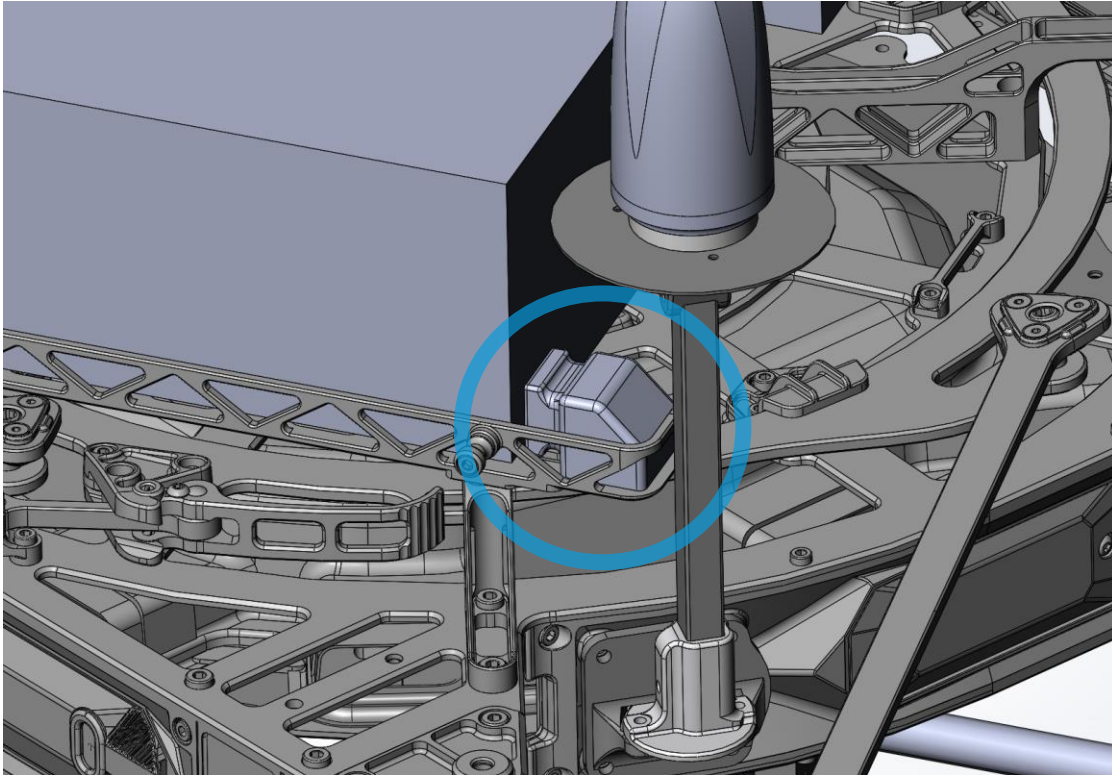


1. The battery shim comes with a top and bottom portion.

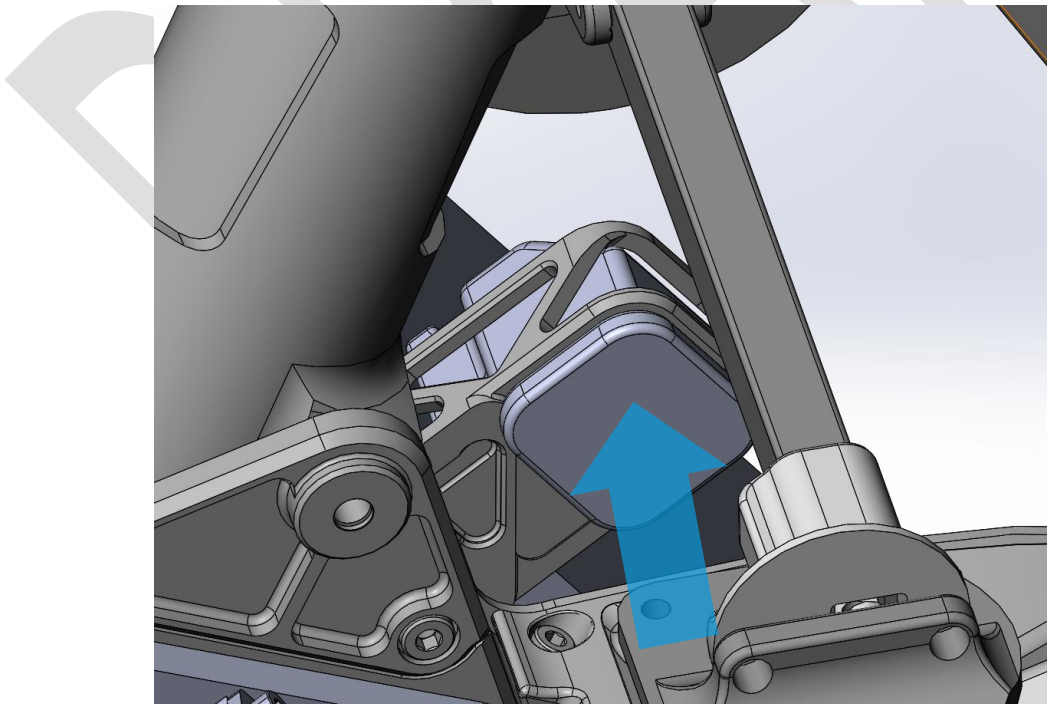




2. Install the top portion in the battery rack, behind the GNSS antenna.

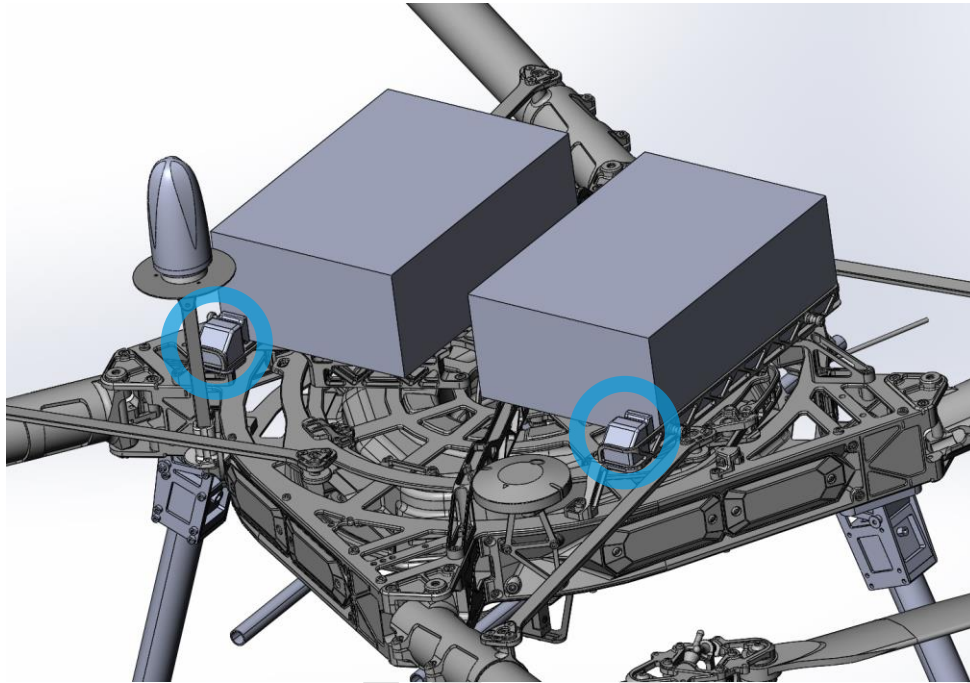


3. Push in the bottom portion from underneath the battery rack.





4. Repeat the same steps for the other side of the battery rack.



DRONE TO PAYLOAD POWER CONVERSION

On the Alta X, power delivery from the drone to the payload adapter (PLI) is done through two DC to DC regulators, converting from battery power to 24V DC.

Parts Needed

2x 12V DC to DC Regulator for Alta X
Available from FreeFly, SKU : 910-00423



Installation

1. Install the 12V DC to DC regulators on the Alta X side panels, according to the manufacturer's recommendations.
2. Connect the XT30 connector to the drone-side battery.
3. Connect the XT60 payload side connectors in series to obtain 24V DC.
4. Connect the 24v DC line to the PLI mount's connector.



Do not use less than 24V DC for the power supply to the payload. This may cause excessive amperage flow from the drone and could result in damage to payloads or voltage regulators.

CAUTION

DISPOSAL



Do not put batteries or other electrical equipment into general waste containers. Substances in batteries are harmful to human health and the environment. Dispose of electrical equipment at a collection point or recycling center. Contact your local authority for detailed information.



SUPPORT

Our searchable support knowledge base contains information on workflows, tips, hints, and probable resolutions to error messages or commonly encountered situations.

Normal support business hours are **Monday - Friday, 8 AM — 5 PM** USA Central Time.

Our GeoCue Support website contains general workflow information, in addition to specific issue and error messages that you may encounter. Click on the link and search for information contained in the knowledge base.

If a support request is sent during business hours a representative will typically get back to you within 4 hours. If received after hours, a response will be sent the following day. To speed response time please include the following information in your request:

- Contact information - please include e-mail address and phone number
- Company name
- Product name and version number
- Model and Serial Number

If your request includes problems pertaining to a specific error message, please include a screenshot of the error message.

For hardware and software support contact: support@geocue.com